

Kingsford Study Area

PROGRESS UPDATE SPRING 2006

Since 1997, Ford Motor Company (Ford) and The Kingsford Products Company (Kingsford Products) have been working closely with community members, the City of Kingsford, Breitung Township and others to address environmental issues associated with the companies' historical operations in the Kingsford area. Ford and Kingsford Products developed this newsletter to share information about activities being conducted in the Kingsford Study Area.

Introduction

Ford and Kingsford Products, in coordination with the City of Kingsford and Breitung Township, have continued to make significant progress in addressing environmental issues in the Kingsford Study Area. The companies remain committed to addressing environmental conditions in the Kingsford Study Area and keeping the community informed.

Groundwater Treatment Plant



- **Completed Fall 2005**
- **Capacity up to approximately 500 gallons per minute**
- **Extraction from approximately 50 wells**

Construction activities were completed on the final phase of this project – a full-scale groundwater extraction and treatment system near the Menominee River during Fall 2005. The new plant treats the extracted groundwater with the treated water discharged directly to the Menominee River under a permit issued by the Michigan Department of Environmental Quality (MDEQ). The completed full-scale system is the culmination of a number of years of monitoring, testing, and pilot studies to determine the appropriate methods and procedures to intercept, extract, and effectively treat groundwater in the Kingsford Study Area. The system began initial startup and shakedown operation in October 2005 and has now successfully reached steady state operation with extraction from its entire well network.

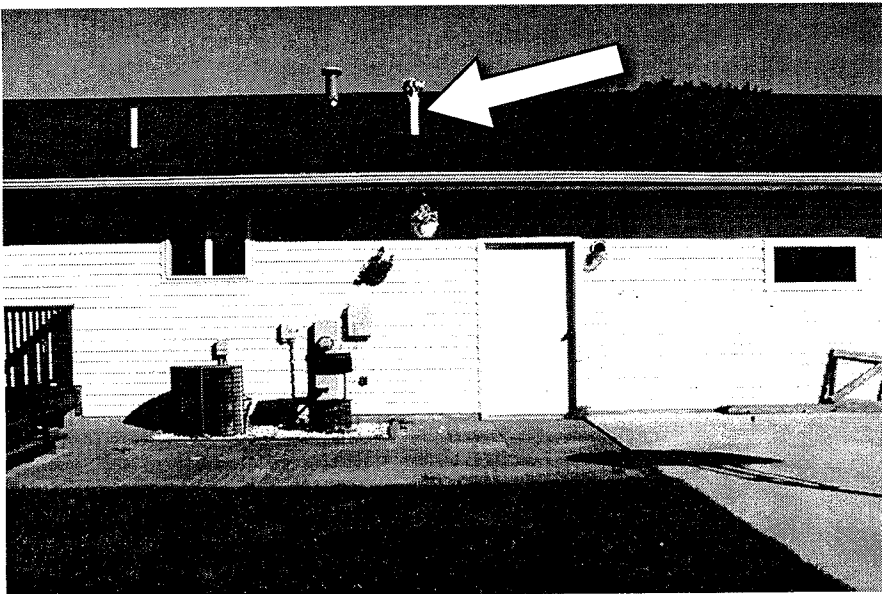
Vapor Control Systems

Greater than 80% of residents we've contacted to date have scheduled to have a vapor control system installed.

Vapor control systems are designed to minimize the potential for methane from subsurface sources from accumulating beneath a structure. Vapor control systems are a preventative measure and additional safety factor in addressing environmental conditions in the Kingsford Study Area. The vapor control system consists of an extraction pipe inserted below the lowest level of the building structure that will vent potential vapors from the subsurface to the outside of the structure minimizing the potential for accumulation.

Vapor control systems work similarly for both residential and commercial structures. The exact placement of the pipe will be determined based on the structure and the owner's preferences. Free installation of the vapor control system is part of the long-term environmental response and

monitoring activities in the Kingsford Study Area as set forth in a Consent Judgment agreement with the MDEQ. If you would like to have a vapor control system installed at your home or business, please call the local ARCADIS office at **906.776.0206**.



◀ An area home with a vapor control system where the pipe vents through the roof at the back of the house. This is one option for extending the pipe outside the structure and above the roof line.

Residential Methane Program

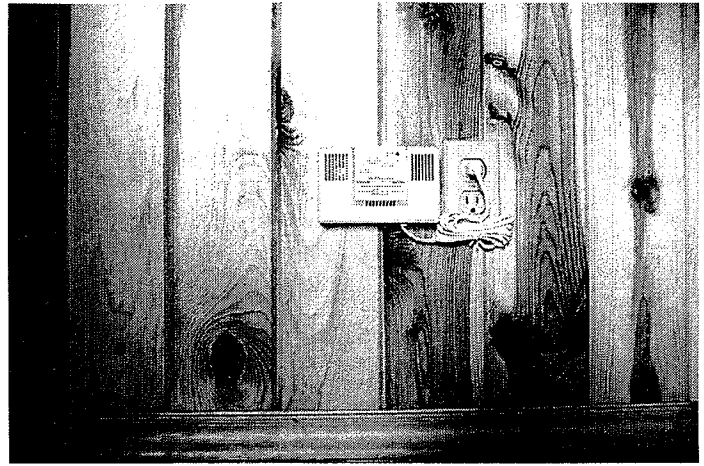
As of January 2006:

- Over 839 inspections have been completed
- Over 588 residential vapor control systems installed

ARCADIS, on behalf of Ford and Kingsford Products, continues to coordinate the methane program to help ensure that methane is identified well before a potential safety hazard could develop in a house. In addition to the inspections and installation of vapor control systems, ARCADIS continues to regularly check methane detectors and follow up on methane detector soundings.

**If your methane detector sounds,
leave your house at once and call 911.**

The Kingsford Public Safety Department or the Breitung Township Fire Department will respond and coordinate any necessary follow-up activities. This procedure should be followed even though no methane from the ground has been found in any of the houses since the methane detector program was initiated in 1998.



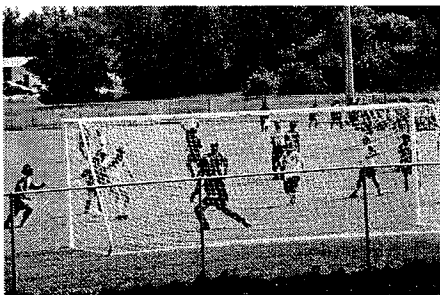
If you would like a free methane detector installed in your home, please call the local ARCADIS office at **906.776.0206**.

Non-Residential Methane Program

ARCADIS also continues to coordinate the methane program for non-residential structures in the Kingsford Study Area. Soil vapor probes are placed adjacent to the foundations of commercial, industrial or institutional buildings to monitor for the potential presence of methane in soils surrounding or beneath the structures. ARCADIS continues to administer this program, including soil vapor probe installation and routine monitoring.

- **Over 35 commercial vapor control systems installed**

Lodal Park and Riverside Disposal Area

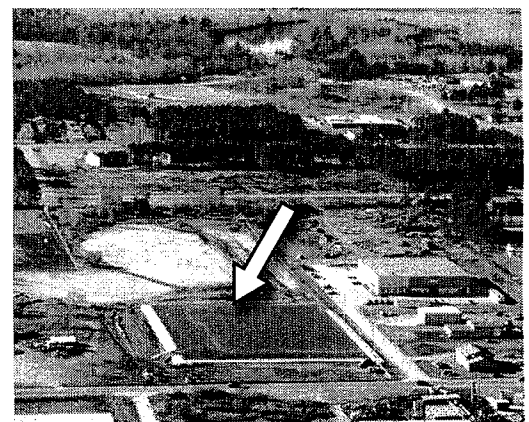


Activities outlined in the Interim Response Action Plans have been completed at Lodal Park and the former Riverside Disposal Area.

The soccer field facility was completed during the summer of 2004 and has been in use since that time.

Northeast Pit

Environmental response construction activities at the former Northeast Pit, an area west of the old Ford and Kingsford Products plant site, have been completed. Primary activities included soil excavation, waste removal and/or consolidation, and construction of a cover 30 inches thick consisting of several layers, including clean soil or rock, a waterproof liner and an asphalt surface. Appropriate storm water controls were also installed. The site is now suitable for use as a passenger car parking lot to facilitate future development.



Information Line and Website

We invite you to call the local ARCADIS office at **906.776.0206**. Staff are generally available between 7am-5:30pm Central Time, Monday through Friday. You may also leave a message at this number and your call will be returned as soon as possible.

You may also contact us by email at
info@kingsfordstudyarea.com.

We invite you to visit our website at
www.kingsfordstudyarea.com.